

PULSE-METERS



EN Oval gear pulse meters

The oval gear pulse meters are designed to meet a wide range of product delivery measuring requirements in the private distribution of fuel, lubricant and low, medium and high viscosity liquids. The oval gear measuring principle adopted offers high precision and low pressure losses.

A complete range of models is designed to satisfy all flow rate requirements.

Easy interfacing with control systems makes these pulse meters the ideal solution for equipping fuel delivery pumps for private use in stationary lubricant

transfer/delivery systems, as meters for tank filling arms, for control of burner or power unit fuel consumption and other industrial applications requiring fluid delivery control.

Performance

- Precision $\pm 0.5\%$ in flow rate range after calibration
- Repeatability 0.2%
- Pressure loss < 0.5 bars (7 psi) at max flow rate

Construction features

- Body with aluminium measuring chamber
- Oval gears made of acetalic resin

- Aligned inlet/outlet apertures provided with female thread
- Integrated suction filter (not in model K400 / K200)

Connections

Pulse meter for connection to external receiver.

Type of output signal: raw signal (reed switch), single channel.

Max 28 V Ac/dc 100 mAmp.

Pulse meter K900 with display and impulse transmission.

Display power supply 4-12 Vdc, 1.2 Amp.

Type of output signal: open collector max 50 V, 1.2 Amp, single channel. On-board display for calibration and local reading.



Remote display available



K200 HP

Pulsar **1400** p/l

Flow rate **2,5** l/min

Accuracy $\pm 0,5\%$

I/O **1/8"**

K200

Pulsar **1400** p/l

Flow rate **100** l/min

Accuracy $\pm 0,5\%$

I/O **1/4"**

K400

Pulsar **100** p/l

Flow rate **80** l/min

Accuracy $\pm 0,5\%$

I/O **1/2"**

K600/3

Pulsar **35** p/l

Flow rate **100** l/min

Accuracy $\pm 0,5\%$

I/O **1"**

K600/4

Pulsar **26** p/l

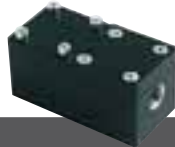
Flow rate **150** l/min

Accuracy $\pm 0,5\%$

I/O **1 1/2"**



Low flow-rate



Medium flow-rate



K700

Pulsar **14** p/l

Flow rate **250** l/min

Accuracy $\pm 0,5\%$

I/O **2"**



High flow-rate

K900

Pulsar **10** p/l

Flow rate **500** l/min

Accuracy $\pm 0,5\%$

I/O **3"**



Code	Description	Pulsar		Flow rate		Pressure		2 x 1,5 V	Inlet filter	I/O	Inlet filter	Weight Kg	Packaging mm
		p/l	p/gal	l/min	gal/min	bar	psi						
000452030	K200 HP	1400	5306	0,1 - 2,5	0,03 - 0,66	1000	14200	-	-	1/8"	-	0,5	65x100x130
000452000	K200	1400	5306	10-100 l/h	0,03 - 0,66	30	426	-	-	1/4"	-	0,5	65x100x130
00044000A	K400	100	379	1 - 30	0,26 - 0,79	70	994	-	-	1/2"	-	0,5	80x80x75
00044007A	K400 windscreen	100	379	1 - 30	0,26 - 0,79	70	994	-	-	1/2"	•	0,5	80x80x75
F00472A20	K600/2-3 3/4" oil	33	130	6 - 60	1,58 - 15,8	70	994	-	•	3/4"	•	2	200x120x140
F00472A00	K600/3 1" diesel	35	133	10 - 100	2,64 - 26,4	30	426	-	•	1"	•	2,6	200x120x140
000473000	K600/4	26	98	15 - 150	3,9 - 39	20	284	-	•	1 1/2"	•	3,2	200x120x140
000498000	K700	14	53	25 - 250	6,6 - 66	20	284	-	•	2"	•	5,5	345x175x255
F0049902A	K900	10	38	50 - 500	13,2 - 132	20	284	•	•	3"	•	12	400x290x200