

HANSEN™

THREADED PIPE FITTINGS

HANSEN™ THREADED PIPE FITTINGS

The high demand for non-metallic threaded fittings (tapered thread) grew this range to over 200.

All of our Threaded Pipe Fittings carry world wide approval for potable (drinkable) water. For more information on these and other approvals see the reverse of this brochure.

SHN Hex Nipple

Size mm:
6
8
10
15
20
25
32
40
50
65
80
100



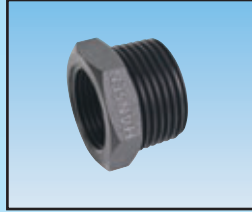
SRHN Reducing Hex Nipple

Size mm:
8 x 6 40 x 32
10 x 6 50 x 20
10 x 8 50 x 25
15 x 6 50 x 32
15 x 8 50 x 40
15 x 10 65 x 32
20 x 10 65 x 40
20 x 15 65 x 50
25 x 15 80 x 40
25 x 20 80 x 50
32 x 20 80 x 65
32 x 25 100 x 50
40 x 20 100 x 65
40 x 25 100 x 80



SRB Reducing Bush

Size mm: 40 x 25
15 x 6 40 x 32
15 x 8 50 x 15
15 x 10 50 x 20
20 x 8 50 x 25
20 x 10 50 x 32
20 x 15 50 x 40
25 x 8 65 x 32
25 x 10 65 x 40
25 x 15 65 x 50
25 x 20 80 x 40
32 x 15 80 x 50
32 x 20 80 x 65
32 x 25 100 x 50
40 x 15 100 x 65
40 x 20 100 x 80



SP Plug

Size mm:
6
8
10
15
20
25
32
40
50
65
80
100



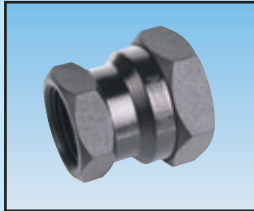
SS Socket

Size mm:
15
20
25
32
40
50
65
80
100



SRS Reducing Socket

Size mm:
20 x 15 50 x 25
25 x 15 50 x 32
25 x 20 50 x 40
32 x 20 65 x 40
32 x 25 65 x 50
40 x 20 80 x 50
40 x 25 80 x 65
40 x 32 100 x 65
50 x 20 100 x 80



SE Female Elbow

Size mm:
15
20
25
32
40
50
65
80
100



SMFE Male-Female Elbow

Size mm:
15
20
25
32
40
50



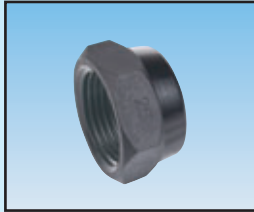
ST Female Tee

Size mm:
15
20
25
32
40
50
65
80
100



SC Cap

Size mm:
15
20
25
32
40
50
65
80
100



SMHT Male Hose Tail

Size mm:
6
8
10
15
20
25
32
40
50



SRMHT Reducing Male Hose Tail

Size mm:
8 x 6
8 x 10
10 x 6
10 x 8



SNT Nut and Hose Tail

Size mm:
15
20
20 x 15
25
25 x 15
25 x 20
32
40
50



STF(W) Tank Fitting White STF(B) Tank Fitting Black

Size mm:
15
20
25
32
40
50



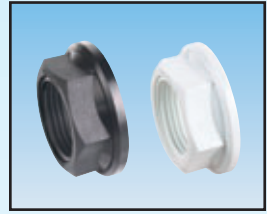
SFTFT Female Tank Fitting

Size mm:
15
20
25
32
40
50
80
100



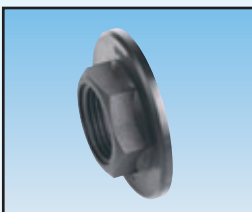
SBN(W) Back Nut (White) SBN(B) Back Nut (Black)

Size mm:
15
20
25
32
40
50



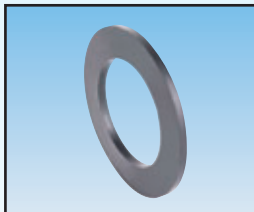
SBNL Large Back Nut

Size mm:
15
20
25
32
40
50



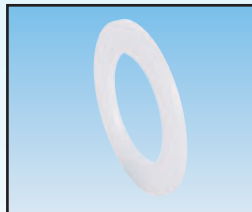
SW(B) Male Tank Fitting Washer

Size mm:
15
20
25
32
40
50



SW(P) Low Density Poly Washer

Size mm:
15
20
25
32
40
50



SWL Female Tank Fitting Washer

Size mm:
15
20
25
32
40
50

